

10ac Foothills Investment Land

Casa Grande, Arizona

**COLDWELL
BANKER**

ROX REALTY



Beautiful investment parcel in the foothills northwest of Casa Grande.

Look at the map: wedged between the incredibly beautiful COPPER MOUNTAIN RANCH master planned community, GRANDE VALLEY, the Gila River Indian Community and the Ak-chin Regional Airport (just to the west), land in this area has nowhere to go but up!

Use(s): Investment or build a custom home or?

Location: West of Papoose Rd, south of Arrowhead Rd, Casa Grande

Size: 9.45ac

Zoning: Pinal County GR (General Rural)

Utilities: Power nearby

Tax Parcel: 502-30-006

Price: \$69,000 (\$7,300/ac)

Other: Owner/agent

Aerial photo; property location and information

Rev. 8.7.2014

The information contained herein from sources deemed reliable. COLDWELL BANKER ROX REALTY has no reason to doubt its accuracy but do not guarantee it. It is the responsibility of the person reviewing it to independently verify it. This information package is subject to change, prior sale or complete withdrawal without notification.



Rock Earle
Associate Broker, Principal
520.421.9000
rock@cbrox.com



Brett Eisele
Associate Broker, Principal
520.560.2555
brett@cbrox.com



Keith LaVoo
Associate Broker
520.560.3787
keith@cbrox.com

COLDWELL BANKER ROX REALTY
1919 N Trekkell Rd, Casa Grande AZ 85122
cbroxcommercial.com
520.423.8250

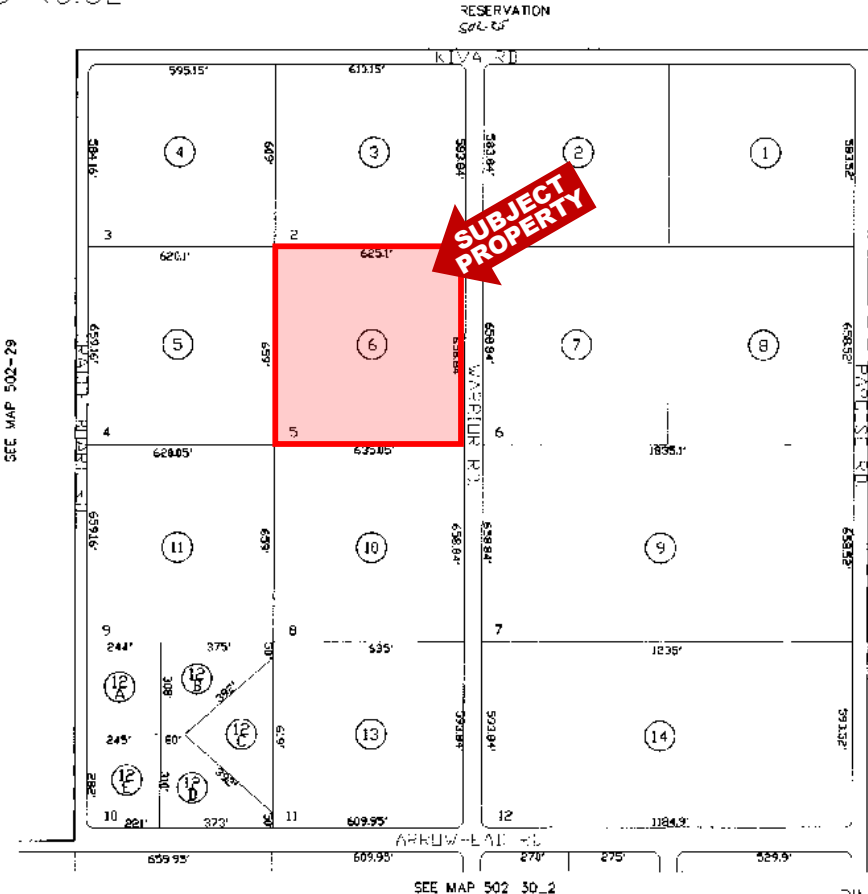
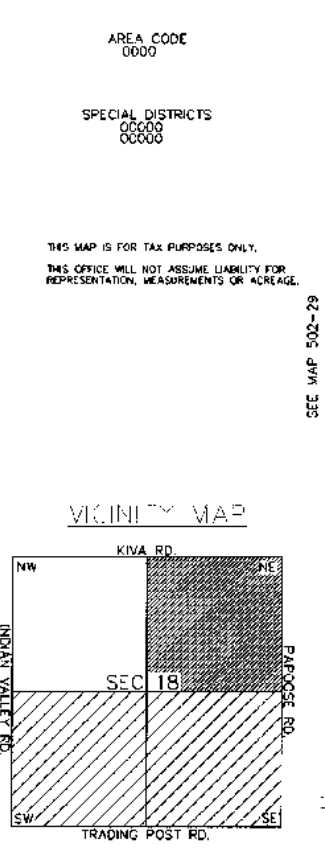
10ac Foothills Investment Land

Casa Grande, Arizona

**COLDWELL
BANKER**

ROX REALTY

SEC. 18 NE. TN. 5S RG. 5E



502-30
1/3
INDIAN VALLEY
RANCH LOTS UNIT 1
SPL. 9 - PG. 34

THE ORIGINAL PLAT OF THIS SUBDIVISION IS
ON FILE WITH THE PINAL COUNTY RECORDERS
OFFICE. FOR COMPLETE INFORMATION OF PLAT
AND CCR'S CALL (520) 868-7100.

SEE MAP 502-28

SCALE: 1" = 300'

04-24-2002

Assessor's Plat Map

Rev. 8.7.2014

The information contained herein from sources deemed reliable. COLDWELL BANKER ROX REALTY has no reason to doubt its accuracy but do not guarantee it. It is the responsibility of the person reviewing it to independently verify it. This information package is subject to change, prior sale or complete withdrawal without notification.



Rock Earle
Associate Broker, Principal
520.421.9000
rock@cbrox.com



Brett Eisele
Associate Broker, Principal
520.560.2555
brett@cbrox.com



Keith LaVoo
Associate Broker
520.560.3787
keith@cbrox.com

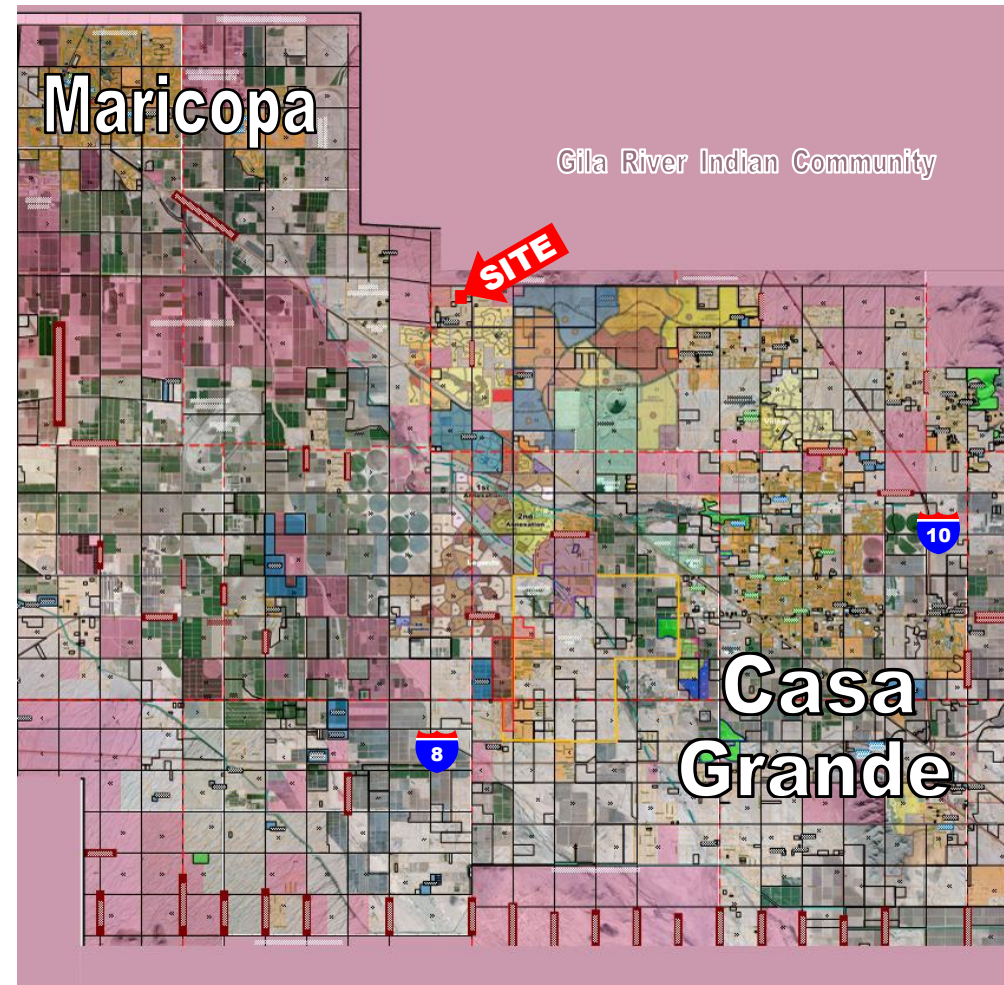
COLDWELL BANKER ROX REALTY
1919 N Trezell Rd, Casa Grande AZ 85122
cbroxcommercial.com
520.423.8250

10ac Foothills Investment Land

Casa Grande, Arizona

**COLDWELL
BANKER**

ROX REALTY



Aerial photo, map; property location

Rev. 8.7.2014

The information contained herein from sources deemed reliable. COLDWELL BANKER ROX REALTY has no reason to doubt its accuracy but do not guarantee it. It is the responsibility of the person reviewing it to independently verify it. This information package is subject to change, prior sale or complete withdrawal without notification.



Rock Earle
Associate Broker, Principal
520.421.9000
rock@cbrox.com



Brett Eisele
Associate Broker, Principal
520.560.2555
brett@cbrox.com



Keith LaVoo
Associate Broker
520.560.3787
keith@cbrox.com

COLDWELL BANKER ROX REALTY
1919 N Trekkell Rd, Casa Grande AZ 85122
cbroxcommercial.com
520.423.8250